

## PRODUCT INFORMATION

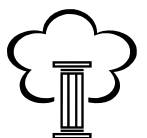
Bathrooms

### Noa Bath & Shower Tap



#### FEATURES AND BENEFITS

- Manufactured entirely in Italy
- Highest quality stainless steel
- WRAS approved products
- Contemporary Italian design
- Ceramic disc valve Italian cartridge
- All product in stock for quick delivery
- All products are lead free



## PRODUCT INFORMATION

---

Bathrooms

### FAQ's

**Q:** Is the product easy to install?

**A:** Yes, however we would recommend that a qualified installer is used.

**Q:** How do I turn the water on?

**A:** Lift the lever to operate the flow turning right for cold and left for hot.

**Q:** What water pressure do I require to operate the product?

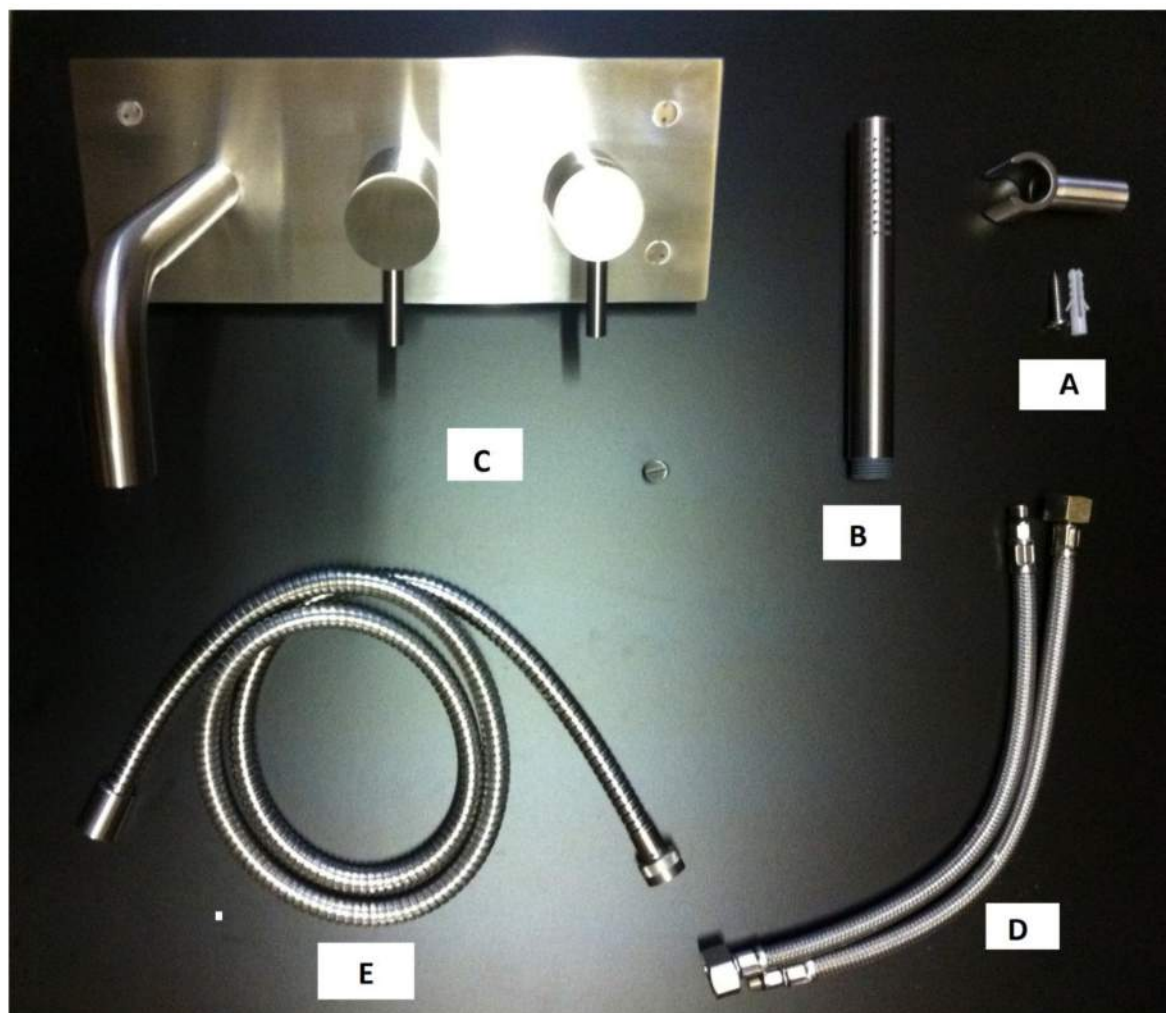
**A:** 1 bar.

**Q:** How do I care for my product?

**A:** Please refer to the section on cleaning and care instructions.

# PRODUCT INFORMATION

Bathrooms

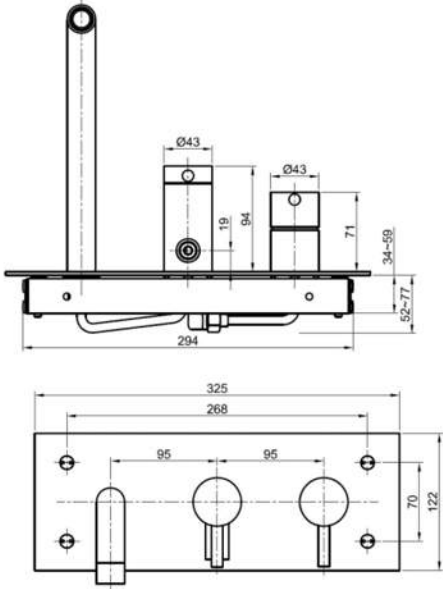


Item	Description	Quantity
A	Wall Bracket with Fixing Screw (Optional)	1
B	Shower Head (Optional)	1
C	Bath Shower Mixer	1
D	Flexi Hoses	2
E	Shower Hose (Optional)	1

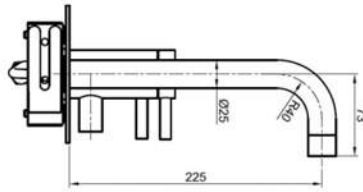
# PRODUCT INFORMATION

Bathrooms

## DIMENSIONAL DRAWING



A



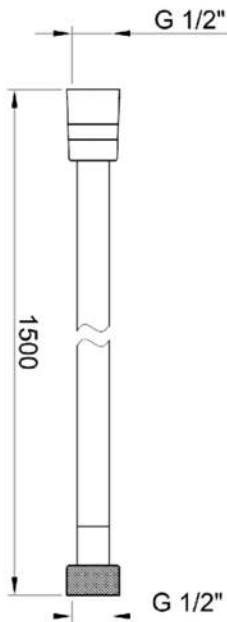
$\varnothing 23$

184

10

G 1/2"

B

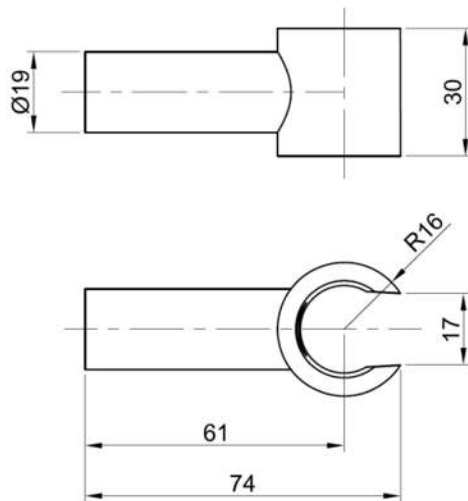


G 1/2"

1500

G 1/2"

C



$\varnothing 19$

30

17

61

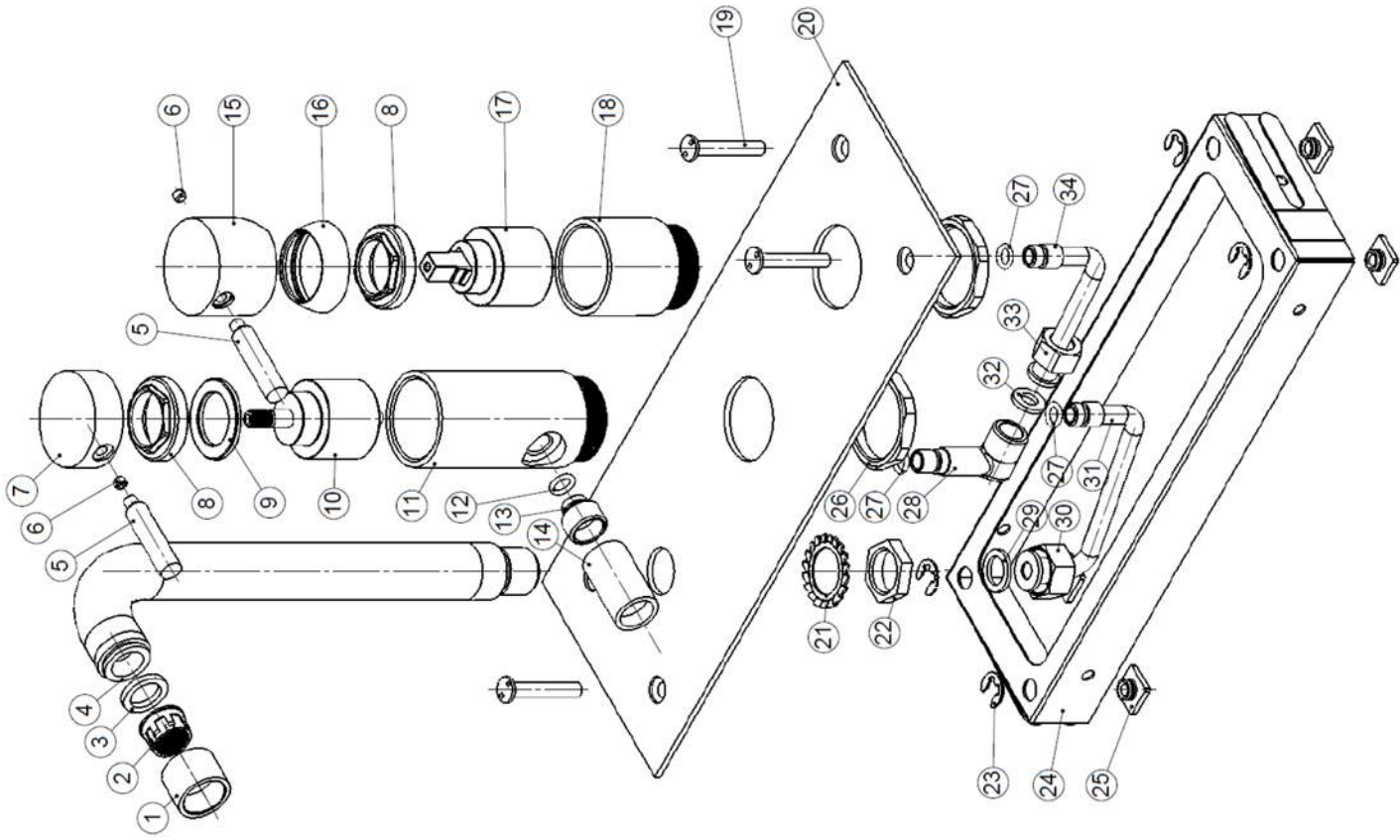
74

D

# PRODUCT INFORMATION

Bathrooms

## EXPLODED PARTS LIST - DRAW



## PRODUCT INFORMATION

Bathrooms

### EXPLODED PARTS LIST - TABLE

Item	Description	Quantity
1	Aerator	1
2	Aerator Mes	1
3	AeratorWasher	1
4	Aerator Connection	1
5	Handle Lever	2
6	Grub Screw	2
7	Diverter Handle Head	1
8	Retaining Nut	2
9	Washer	1
10	Diverter Cartridge	1
11	Diverter Sleeve	1
12	Washer	1
13	Water Outlet Part	1
14	Water Outlet Pipe	1
15	On/Off Handle Head	1
16	On/Off Cartridge Shroud	1
17	On/Off Cartridge	1
18	On/Off Cartridge Sleeve	1
19	Fixing Nut	4
20	Back Plate	1
21	Washer	1
22	Nut	1
23	Circlip	4
24	Back Body	1
25	Back Body Fixings	4
26	Nut	2
27	Washer	2
28	Diverter Connection	1
29	Washer	1
30	Nut	1
31	Internal Pipe	1
32	O-Ring	1
33	Nut	1
34	Internal Pipe	1

# PRODUCT INFORMATION

---

Bathrooms

## INSTALLATION GUIDELINES

1. Installation should be carried out by a competent engineer, in accordance with water regulations.
2. Before installation, ensure supply pipes are flushed clean. Debris or loose particles will affect the efficiency of the ceramic disc cartridge. Failure to flush through pipe work before installation of taps may cause serious damage to the ceramic disc cartridge, for which supplier will not be liable.
3. For mixer taps, it is recommended that hot & cold pressures are equally balanced.
4. Ceramic cartridge in hard water areas. To prolong the lifespan and reduce servicing periods we recommend that a suitable water softener be fitted. Consult your installer/designer for details.

## CLEANING AND CARE INSTRUCTIONS

To maintain the appearance of this product, ensure that it is regularly cleaned only using a clean, soft damp cloth. A solution of warm water and a mild detergent may be used where necessary, and then the fitting rinsed thoroughly and wiped dry. Any other cleaning action will invalidate your warranty.

If the mixer tap has a diffuser it should be unscrewed and cleaned periodically in warm water. Abrasive cleaners, scouring cleaners and acidic cleaners **must not be used** under any circumstances. Avoid contact with all solvents (including chlorinated solvents, ketones or acetones as these may result in surface deterioration or etching). Also avoid contact with any harsh household chemicals such as oven cleaners, drain cleaners, rust removers, paint strippers and toilet bowl cleaners, bar keepers friend, brasso or similar products.

# PRODUCT INFORMATION

---

Bathrooms

## FLOW RATE & OPERATING CONDITIONS

Recommended water pressure 1-5 bar

Optimum water pressure 3 bar